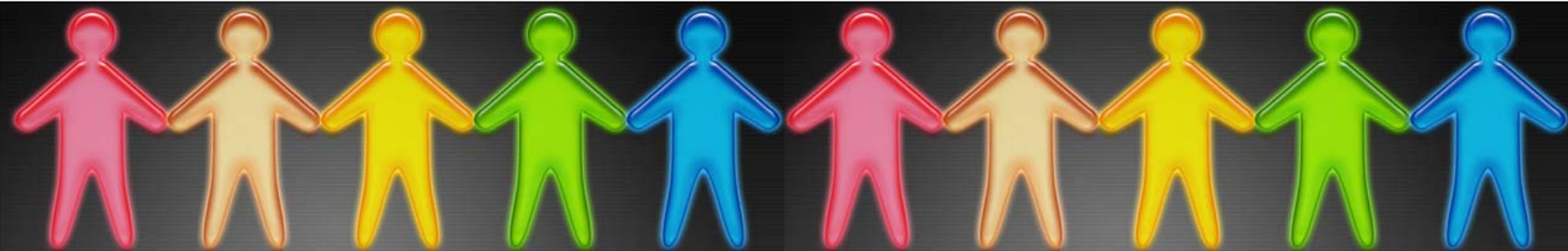


2010-2011 Initial Budget Draft

Port Chester-Rye Union Free School District

Board of Education

March 11, 2010



Discussion Outline



- Context for Budget Discussion
- Proposed Reductions
- Proposed Expenditures
- Revenue Estimates
- Summary of Initial Budget Draft
- “Effective “ Tax Increase
- Budget Development – Next Steps

All amounts in this presentation should be considered preliminary and are subject to change.

Context for Budget Development



- Port Chester has a significant percentage of households earning less than \$35,000 per year, many of these earn less than \$10,000 per year.
- Port Chester has a high rate of children whose parents are unemployed.
- One year after the Town of Rye started foreclosure proceedings against property owners, 11 residential units and vacant parcels have lost title to the town (mostly in Port Chester).

Context for Budget Development



We consistently do more with less!

District	Per / Pupil 07-08 Actual	Per / Pupil 08-09 Actual	Per / Pupil 09-10 Budget	08-09 vs. 09-10
Port Chester	\$16,528	\$17,550	\$17,388	-1.3%
Rye	\$21,365	\$21,092	\$21,992	+4.3%
Ossining	\$22,201	\$22,372	\$22,774	+1.8%
Rye Neck	\$21,471	\$21,268	\$23,174	+9.0%
Peekskill	\$22,902	\$23,771	\$23,748	-0.1%
Mamaroneck	\$21,984	\$23,293	\$23,879	+2.5%
Blind Brook	\$22,707	\$23,035	\$25,944	+12.6%
White Plains	\$24,674	\$25,621	\$25,965	+1.3%
Byram Hills	\$24,628	\$25,583	\$27,423	+7.2%
Harrison	\$26,036	\$27,036	\$27,946	+3.4%

Source: BOCES Negotiations Clearinghouse

Proposed Reductions



\$570,681 Reduction in budgeted expenditures

- Transportation (due to less capping and fewer locations)
- Custodial Overtime
- District-wide Textbook Adoption
- BOCES Occupational HS and Program
- BOCES Regional Alternative HS Program
- District Calendar
- Tax Anticipation Note (TAN) Interest
- Debt Service

Proposed Reductions



\$393,500 Reduction in Staff

- 0.5 District-wide English as a Second Language Teacher
- 3.0 Librarians at elementary level
- 3.0 Part time elementary aide positions hired in December 2009
- 2.0 Full time PCHS hall monitor positions
- 2.0 Computer Lab Teacher Assistants at PCHS and PCMS
- 2.0 Computer Teacher Aides at elementary schools

\$140,000 Reduction in Consultant Services

- Professional Development and associated substitutes
- School Security Consultant
- Financial and Programmatic Auditing

Proposed Expenditures



Expenditure	2009-10 Budget	2010-11 Budget	Dollars + / -	Percent of Change	Percent of Budget
General Support	\$8,332,798	\$8,349,610	+ \$16,812	+ 0.20%	10.69%
Instruction	\$46,105,488	\$48,264,941	+ \$2,159,453	+ 4.68%	61.79%
Transportation & Community Services	\$3,180,620	\$2,965,334	- \$215,286	- 6.77%	3.80%
Employee Benefits	\$13,886,256	\$14,264,610	+ \$378,354	+ 2.72%	18.26%
Debt Service and Transfers	\$4,266,852	\$4,262,177	- \$4,675	- 0.11%	5.46%
Total:	\$75,772,014	\$78,106,672	+ \$2,334,658	+ 3.08%	100%

Revenue Estimates



Revenue	2009-10 Budget	2010-11 Budget	Dollars + / -	Percent of Change	Percent of Budget
Designated Fund Balance	\$1,500,000	\$3,000,000	+ \$1,500,000	+ 100%	3.84%
State Aid	\$17,042,368	\$15,810,000	- \$1,232,368	- 7.23%	20.24%
Local Sources	\$4,953,247	\$4,962,696	+ \$9,449	+ 0.19%	6.35%
Tax Levy (including STAR)	\$52,276,399	\$54,333,976	+ \$2,057,577	+ 3.94%	69.56%
Total:	\$75,772,014	\$78,106,672	+2,334,658	+ 3.08%	100%

Budget Draft Summary



	2009-2010 Budget	2010-2011 Budget Draft	Dollars + / -	Percent Of Change
Expenditures	\$75,772,014	\$78,106,672	\$2,334,658	+ 3.08%
Revenues	\$23,495,615	\$23,772,696	\$277,081	+ 1.18%
Property Assessments	\$3.821 Billion	\$3.763 Billion	- \$57.9 Million	- 1.52%
Tax Levy	\$52,276,399	\$54,333,976	\$2,057,577	+ 3.94%

“Effective” Tax Increase



The sample estimates below illustrate that the tax impact for each household will differ depending on the change in assessment value for their property.

	Assessments		+/-	School Taxes		
	2008	2009		09-10	10-11	+/-
A house on Perry Avenue	\$ 621,900	\$ 615,700	- \$ 6,200	\$ 7,635	\$ 8,163	\$ 529
A house on Alto Avenue	\$ 496,000	\$ 491,000	- \$ 5,000	\$ 6,089	\$ 6,510	\$ 421
A house on Wyman Street	\$ 720,500	\$ 698,900	- \$ 21,600	\$ 8,845	\$ 9,267	\$ 422
A house on Terrace Avenue	\$ 521,500	\$ 516,300	- \$ 5,200	\$ 6,402	\$ 6,845	\$ 443
A house on Ellendale Avenue	\$ 517,100	\$ 511,900	- \$ 5,200	\$ 6,348	\$ 6,787	\$ 439
A house on King Street	\$ 639,000	\$ 632,600	- \$ 6,400	\$ 7,844	\$ 8,387	\$ 543

Budget Development - Next Steps

